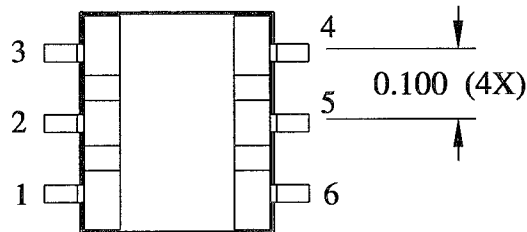
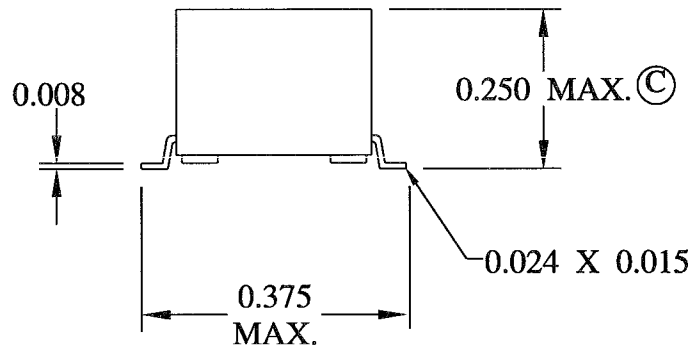
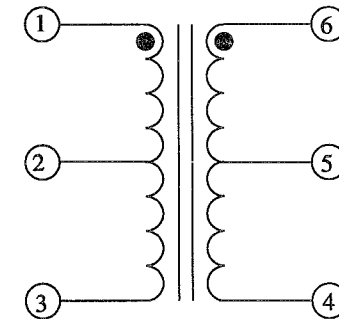
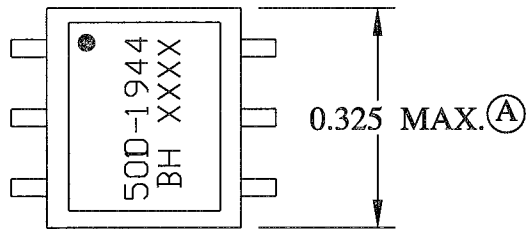


MECHANICAL

SCHEMATIC



ELECTRICAL SPECIFICATIONS

URNS RATIO: 1CT:1CT

OPEN CIRCUIT INDUCTANCE: 1.0mH MIN. 100 KHz 20mV

PRIMARY LEAKAGE INDUCTANCE: 25uH MAX.

INTERWINDING CAPACITANCE: 2.5pF MAX.

DC RESISTANCE: (PRI) 2.0 OHMS MAX. (SEC.) 2.0 OHMS MAX.

HIGH VOLTAGE TEST: 2000 VRMS/1 SEC.

ET CONSTANT: 30Vu SEC. MIN.


OPERATING FREQUENCY: 100 KHz TO 500 KHz

OPERATING TEMPERATURE: -30°C TO 80°C.

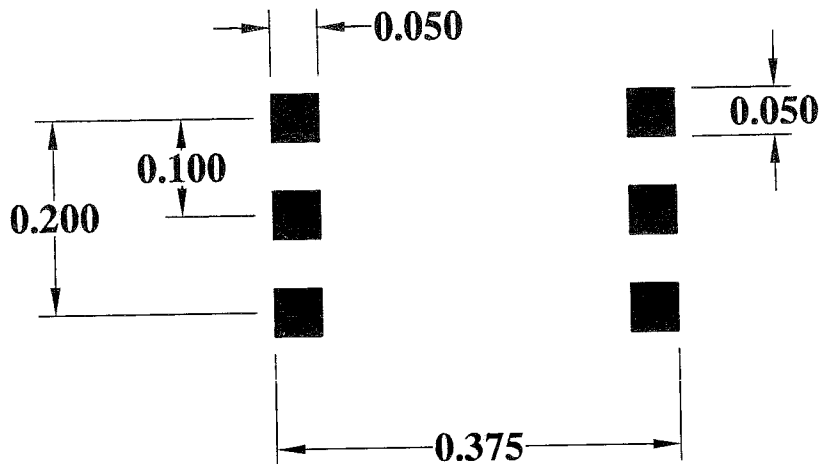
STORAGE TEMPERATURE: -45°C TO 105°C

| ISSUE | DATE | REVISION (Q8539) | BY |
|-------|----------|-----------------------------|-----|
| N | 5-31-01 | ECR #5224 REMOVE DIMENSION | JDC |
| M | 5-16-01 | ECR #5223 HT. TO 0.250 MAX. | JDC |
| L | 3-12-01 | ADD PAGE 3 | JDC |
| K | 12-27-00 | ECR #4946 UPDATE TO CAD | JDC |
| J | 5-22-00 | ADD DIMENSION TARGETS | JDC |
| H | 3-22-99 | ECR #4142 TO LABEL | |

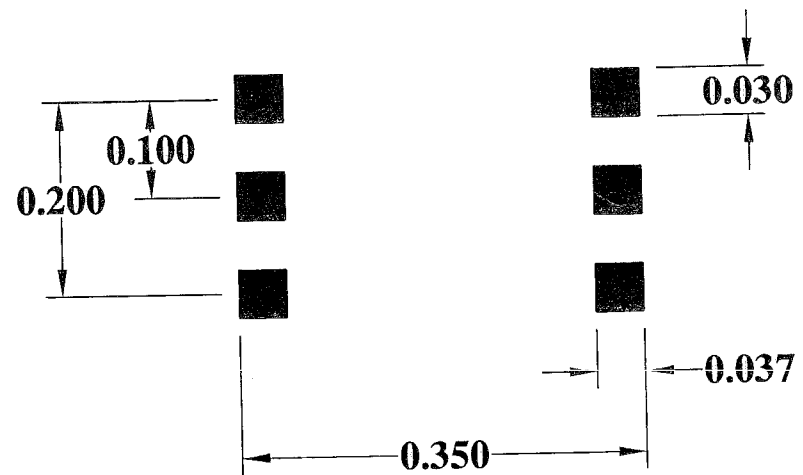
| | |
|--|-------------|
| DESIGN PER: | CATALOG |
| DRAWN: | K. LOFTUS |
| ENGR: | J. DECRAMER |
| UNLESS OTHERWISE SPECIFIED: DIMENSIONS IN INCHES, TOLERANCES NON-CUMULATIVE .XX±.01 .XXX±.005 | |
| PAGE 1 OF 3 | |


| | | |
|--|----------|-------------|
|  BH ELECTRONICS, INC. BURNSVILLE & MARSHALL, MN © 1998 BH Electronics | TITLE: | TRANSFORMER |
| | PART NO. | 500-1944 |

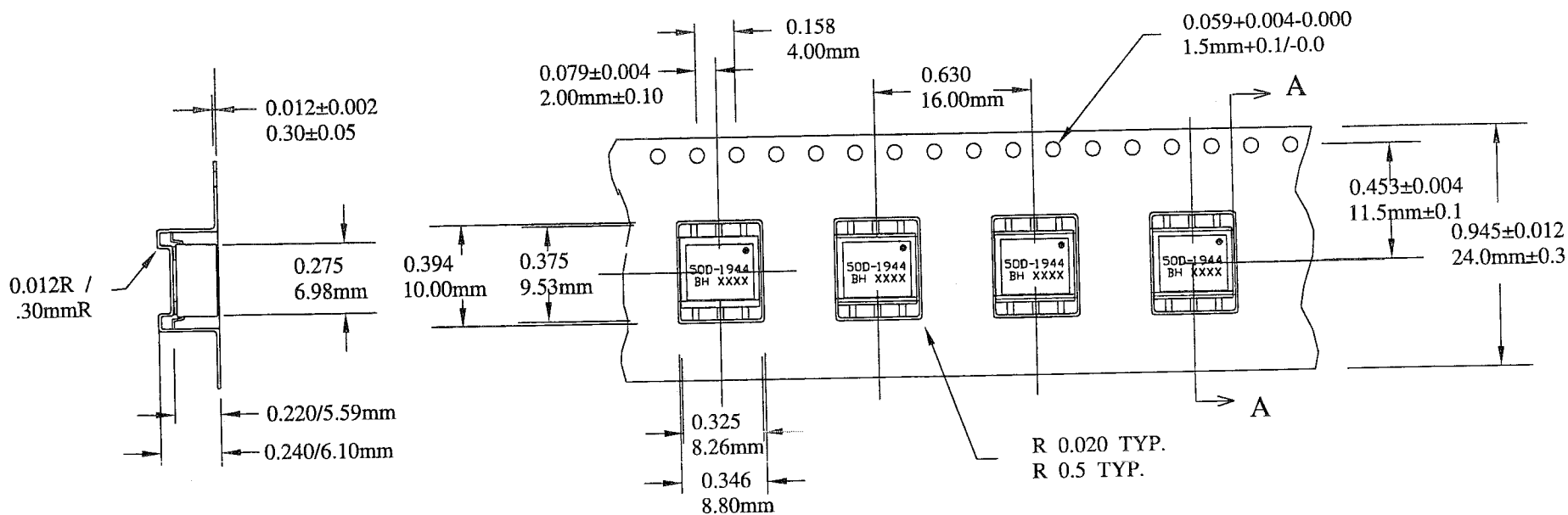
RECOMMENDED PAD ARRANGEMENT




TYPICAL CONTACT AREA



| | | | | | |
|-------|----------|----------------------------|-----|--|---|
| | | | | DESIGN PER: |  BH ELECTRONICS, INC. BURNSVILLE & MARSHALL, MN © 1998 BH Electronics |
| | | | | CATALOG | |
| N | 5-31-01 | ECR #5224 REMOVE DIMENSION | | DRAWN: K. LOFTUS | TITLE: TRANSFORMER |
| M | 5-16-01 | ECR #5223 HT. TO .250 MAX. | JDC | ENGR: J. DECRAMER | |
| L | 3-12-01 | ADD PAGE 3 | JDC | UNLESS OTHERWISE SPECIFIED: DIMENSIONS IN INCHES, TOLERANCES NON-CUMULATIVE .XX±.01 .XXX±.005 | PART NO. 500-1944 |
| K | 12-27-00 | ECR #4946 UPDATE TO CAD | JDC | | |
| J | 5-22-00 | ADD DIMENSION TARGETS | JDC | | |
| H | 3-22-99 | ECR #4142 TO LABEL | | | |
| ISSUE | DATE | REVISION (Q8539) | BY | PAGE 2 OF 3 | |



CARRIER TAPE 811-0204

| ISSUE | DATE | REVISION (Q8539) | BY | DESIGN PER: |  BH ELECTRONICS, INC. BURNSVILLE & MARSHALL, MN © 1998 BH Electronics |
|-------|----------|-----------------------------|-----|--|---|
| N | 5-31-01 | ECR #5224 REMOVE DIMENSION | | CATALOG | |
| M | 5-16-01 | ECR #5223 HT. TO 0.250 MAX. | JDC | DRAWN: K. LOFTUS | |
| L | 3-12-01 | ADD PAGE 3 | JDC | ENGR: J. DECRAMER | |
| K | 12-27-00 | ECR #4946 UPDATE TO CAD | JDC | UNLESS OTHERWISE SPECIFIED: DIMENSIONS IN INCHES, TOLERANCES NON-CUMULATIVE .XX±.01 .XXX±.005 | |
| J | 5-22-00 | ADD DIMENSION TARGETS | JDC | PAGE 3 OF 3 | TITLE: TRANSFORMER |
| H | 3-22-99 | ECR #4142 TO LABEL | | | PART NO. 500-1944 |