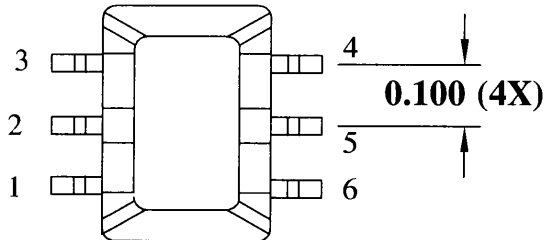
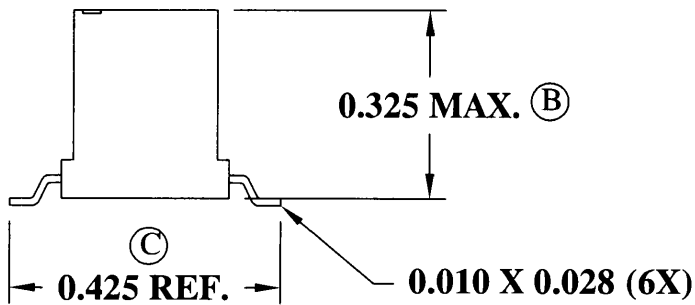
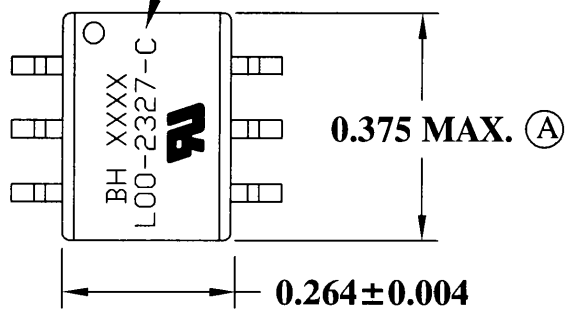


**MECHANICAL**

**\* LOCATION**

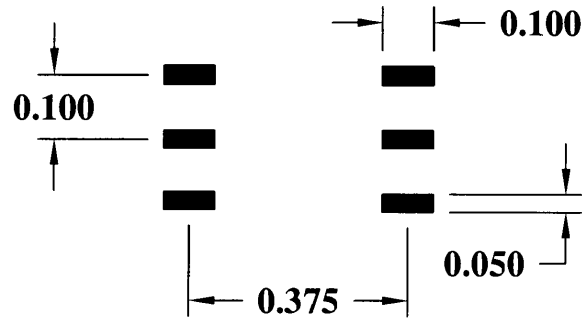


**\* LOCATION**

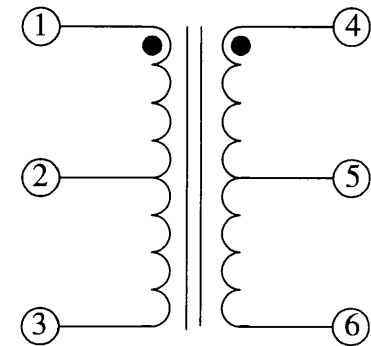
**MARSHALL - L00-2327**  
**CHINA - L00-2327-C**  
**MICROMEX - L00-2327-A**

**RoHS Compliant**

**SUGGESTED PAD LAYOUT**




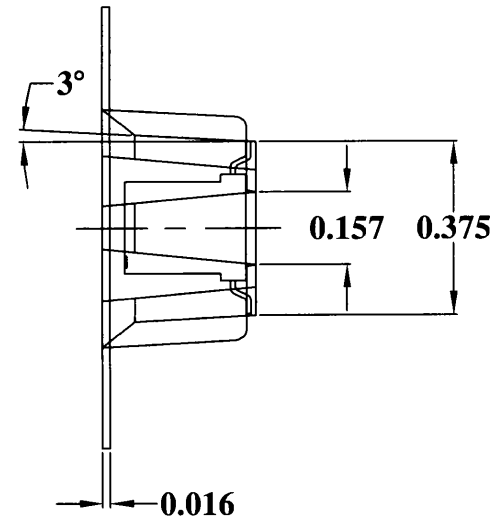
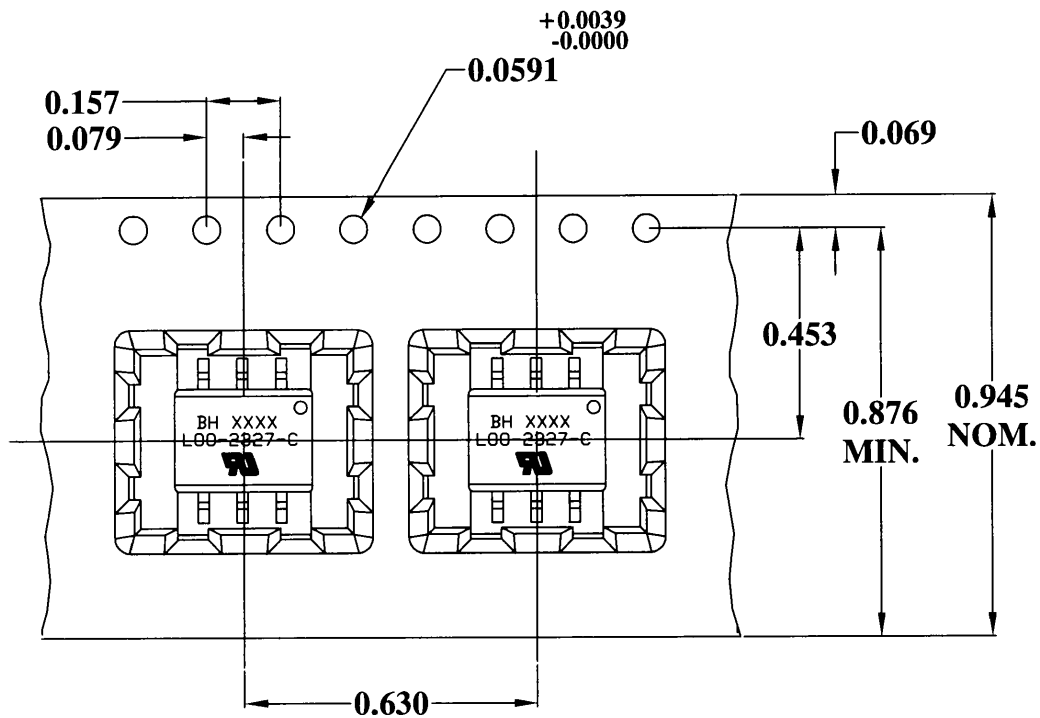
**SCHEMATIC**



**ELECTRICAL SPECIFICATIONS**

TURNS RATIO: 1CT:1.3CT  
 OPEN CIRCUIT INDUCTANCE: 400µH MIN. (1-3) 10 KHz 100mV  
 PRIMARY LEAKAGE INDUCTANCE: 25µH MAX. (1-3 SH 4-6)  
 INTERWINDING CAPACITANCE: 10pF MAX. (1-3 TO 4-6)  
 DC RESISTANCE: 0.6 OHMS NOM. (1-3) (4-6)  
 HIGH VOLTAGE TEST: 3000 VRMS / 1 SEC. (1-6)  
 ET CONSTANT: 18 Vµ SEC. (BIPOLAR)  
 IR REFLOW: 245°C MAX.


				DESIGN PER:	 <b>BH ELECTRONICS, INC.</b> BURNSVILLE & MARSHALL, MN © 1998 BH Electronics
				<b>BH CATALOG</b>	
D	7-15-10	ADD PAGE 2	<i>com</i>	DRAWN: K. LOFTUS	TITLE: <b>TRANSFORMER</b>
C	6-24-10	REVISE LABEL	BM	ENGR: B. MARKS	
B	11-2-05	RoHS COMPLIANT	BM	UNLESS OTHERWISE SPECIFIED: DIMENSIONS IN INCHES, TOLERANCES NON-CUMULATIVE .XX±.01 .XXX±.005	PART NO. <b>L00-2327</b>
A	8-17-05	CUSTOMER PRINT	BM		
ISSUE	DATE	REVISION	BY	PAGE 1 OF 2	



- NOTE: 1. MATERIAL: CPS-101,0.41-MM THICK  
 2. WIDTH (MM) 24  
 3. PITCH (MM): 16  
 4. POCKETS/M: 62.5  
 5. METERS/REEL: 27  
 6. POCKETS/REEL: 1687

811-0315

RoHS Compliant

				DESIGN PER:	 <b>BH ELECTRONICS, INC.</b> BURNSVILLE & MARSHALL, MN © 1998 BH Electronics
				<b>BH CATALOG</b>	
				DRAWN: K. LOFTUS	
				ENGR: B. MARKS	TITLE: <b>TRANSFORMER</b>
				UNLESS OTHERWISE SPECIFIED: DIMENSIONS IN INCHES, TOLERANCES NON-CUMULATIVE .XX±.01 .XXX±.005	PART NO. <b>L00-2327</b>
ISSUE	DATE	REVISION	BY	PAGE 2 OF 2	
D	7-15-10	ADD PAGE 2			
C	6-24-10	REVISE LABEL	BM		
B	11-2-05	RoHS COMPLIANT	BM		
A	8-17-05	CUSTOMER PRINT	BM		